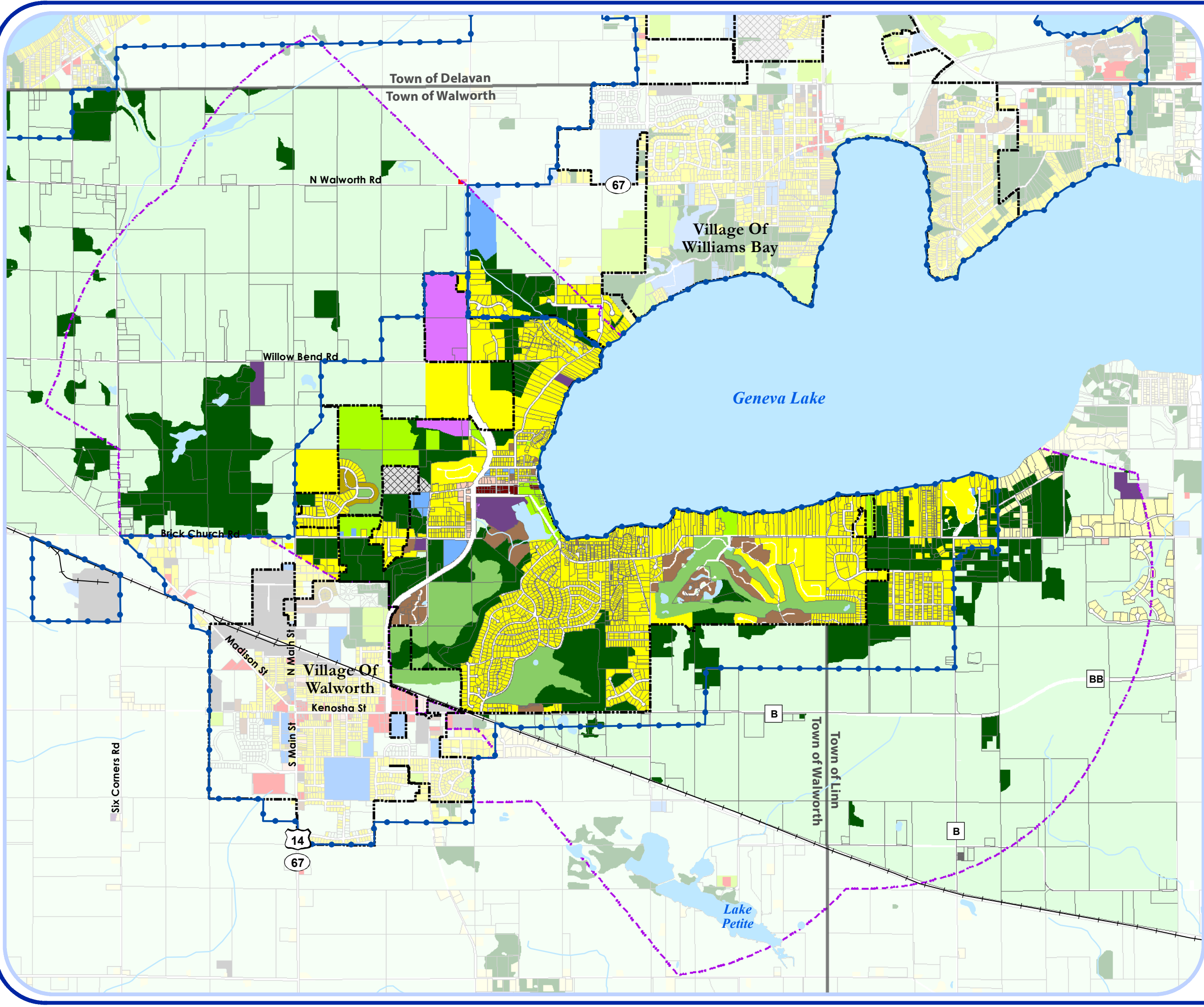


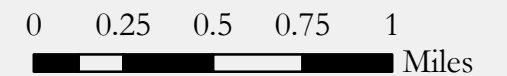
Fontana Comprehensive Plan



- Municipal Boundary
- Town Boundary
- Extra Territorial Jurisdiction
- Urban Service Boundary
- Road/Rail Right of Way
- Railroad

Future Land Use Categories

- Agricultural/Vacant
- Single-Family Residential (Septic)
- Single-Family Residential (Sewered)
- Two-Family/Townhouse Residential
- Mixed Residential
- Neighborhood Commercial
- Central Mixed Use
- Planned Mixed Use
- General Commercial
- General Industrial
- Community Facility
- Special Use
- Public Park & Recreation
- Private Park & Recreation
- Woodland & Open Space
- Mineral Extraction
- Surface Water
- Beyond the Village of Fontana Planning Area



Source: Walworth County LIO, V&A
September 17, 2009

VANDEWALLE & ASSOCIATES INC.
Shaping places, shaping change