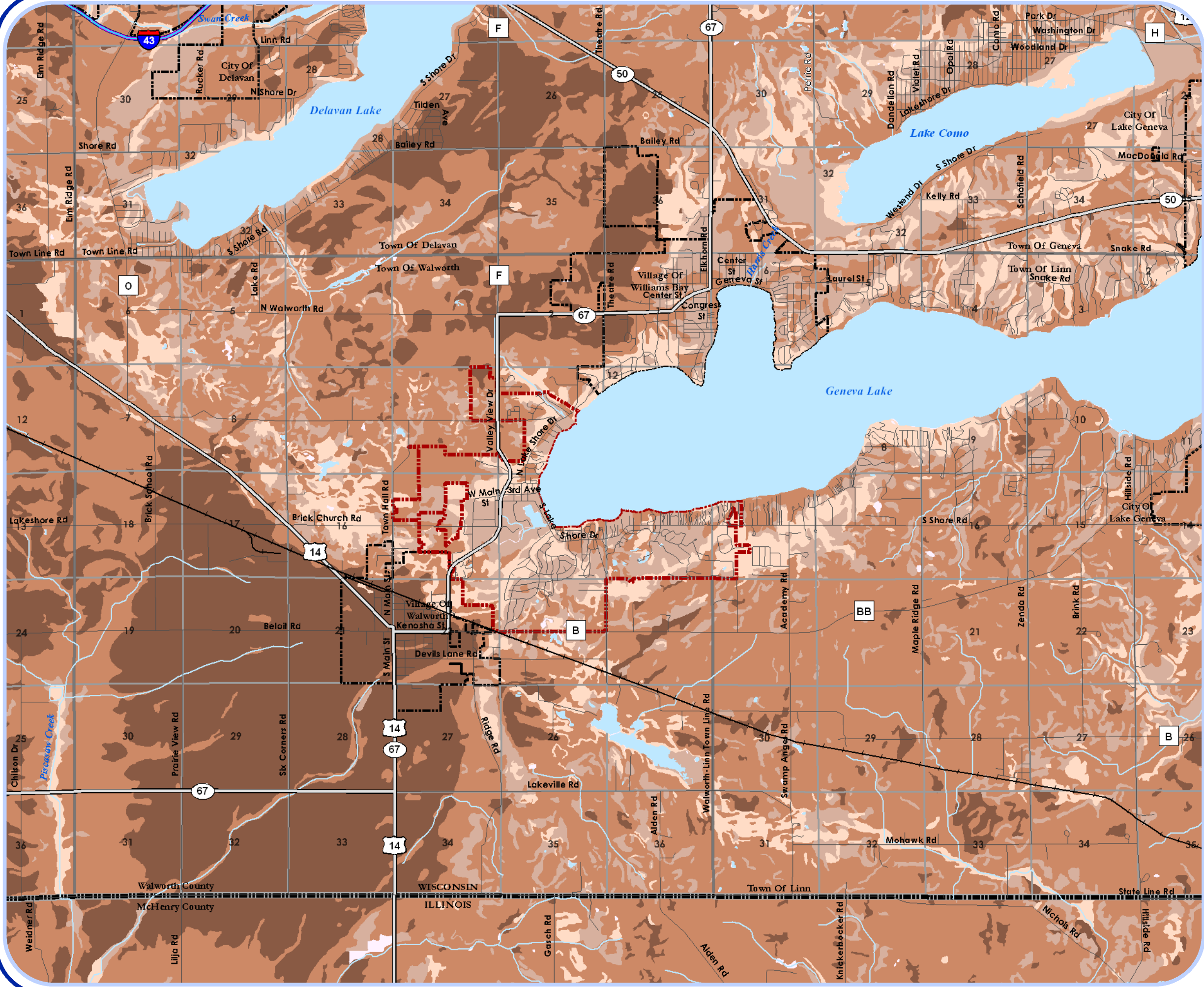


# Soil Suitability for Agriculture

# Map 2

## Fontana Comprehensive Plan



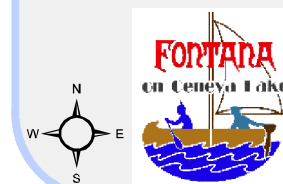
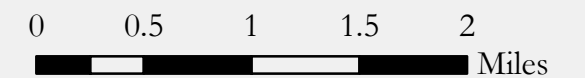
- Village of Fontana
- Other City/Village Boundary
- Other Municipal Boundary
- County Boundary
- Section w/Section Number
- Interstate
- Major Road
- Local Road
- Railroad
- Surface Water

### Soil Capability Class (Most Productive to Least)

- Capability Class I
- Capability Class II
- Capability Class III
- Capability Class IV - VIII
- Not Rated or Not Available

Note: This map is for general informational use only, and is not to be used to obtain detailed siting information. Soil classes derived from the USDA-NRCS Land Evaluation System. The system uses three factors to determine a numeric rating from Class I to VIII: prime farmland, soil productivity for corn & alfalfa, & land capability class. Class I soils have the highest crop yield & few limitations that restrict their use for agriculture. Refer to NRCS documentation for further explanation.

Source: ESRI (2008); Soils - USDA (2002); Walworth Co LIO, SEWRPC, V&A



March 25, 2009  
**VANDEWALLE & ASSOCIATES INC.**  
 Shaping places, shaping change

